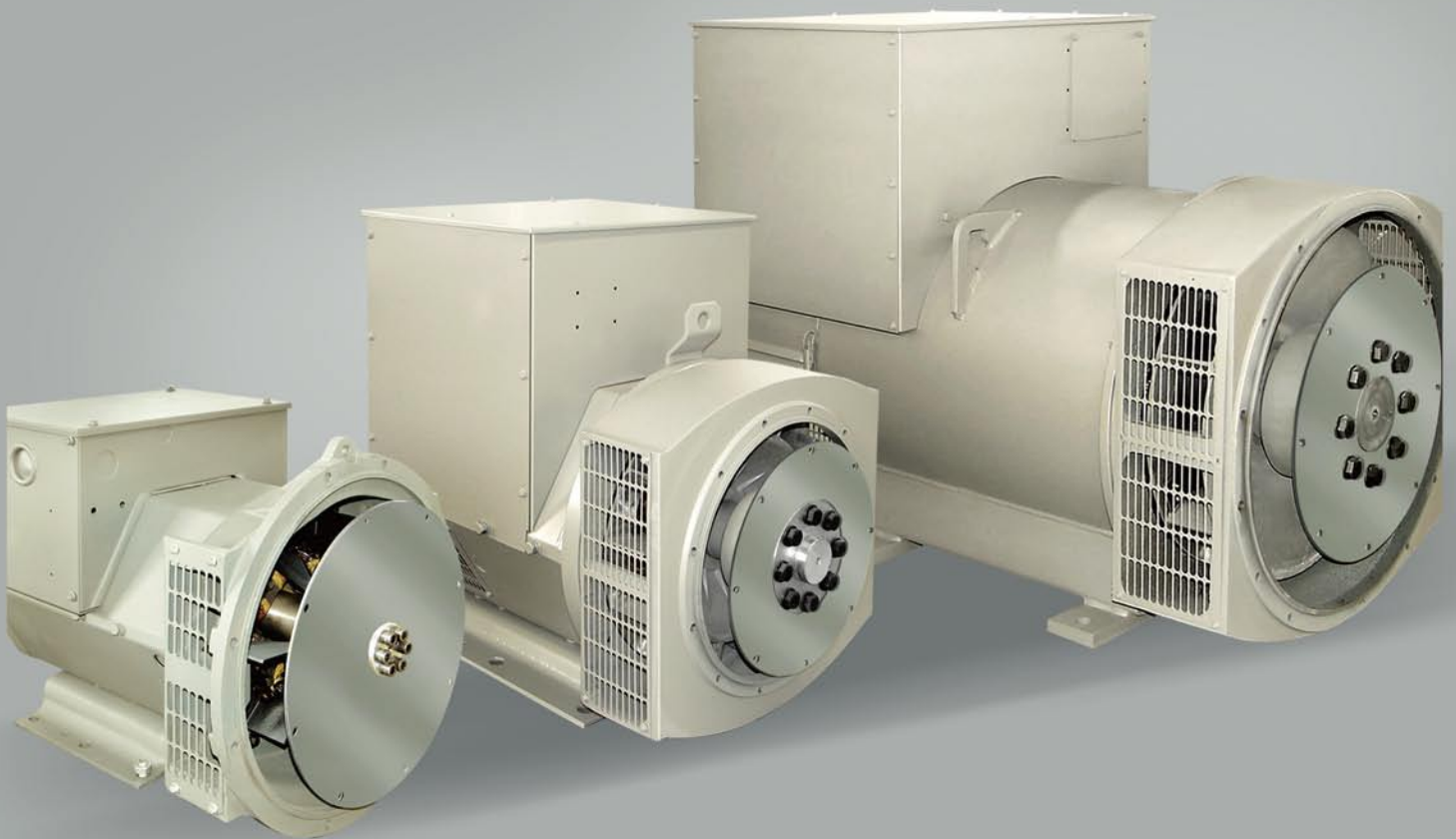


# **XINGNUO** Generator

WUXI XINGNUO ELECTRIC CO.,LTD



***XN BRUSHLESS  
SYNCHRONOUS AC ALTERNATORS***



## INTRODUCTION

Wuxi Xingnuo Electric Production Co.,Ltd situated in Luoshe town at the south of Yangzi River and on the bank of beautiful Taihu Lake, where an auspicious land is told to have six dragons gathered in the ancient time. The company has convenient communications with Shanghai–Nanjing expressway to the east, Beijing–Shanghai railway to the north and State Highway G312.

The company is a large–size manufacturing enterprise of brushless AC generators in our country occupying an area of 50000 square metres, having 380 staff members and over 300 sets of modern production equipment and test facilities. It has passed certification of ISO9001 quality control system and grand as Contract Adhering and Creditable Enterprise. Its annual production is over 500,000 sets of various motors and all the products conform to standards GB755,IEC34,BS5000,VDE0530,NEMA,M G1–22,C22.2–100,CSA,AS1359,etc and inspected by the national test and measurement center to be superior in quality and reliable in performances.

Since its foundation in 1970,the company has consistently strived to have developed various start motors, combined geberating and welding alternators and synchronous generator. In the recent years, through digesting and absorbing foreign advanced technique it has independently developed

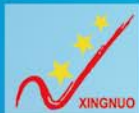




and manufactured 6.5KW–2000KW XN series brushless AC synchronous generators and digital alternators. Meanwhile, it has also undertaken great technical transform in order to form capacity of batch production and turn the series machines into its key products.

Presently the company has established long–term cooperation and complementing relationship with famous domestic and foreign complete generator companies and sold its products far to European American and East–south Asian countries.

Taking the aim of "Quality the first, service the utmost, customer the top, fame the most important", the company persists in regarding science and technique as its motive power and foster a sincere, matter–of–fact, pioneering and creative sprit to make its contribution to forging our homemade international brand of generator manufacture and rapid growth of China national industries.



## ◆ Characteristic

### SPECIAL FEATURES OF THE XN RANGE

- ◇ Optional auxiliary winding system provides sustained short circuit capability.
- ◇ Advanced automatic voltage regulator (AVR) control for trouble-free operation under the most demanding conditions.
- ◇ Easy paralleling with mains or other generators.
- ◇ Standard 2/3 pitch windings avoid excessive neutral currents.
- ◇ Dynamically balanced rotors, with sealed-for-life ball bearings and single or two-bearing construction.
- ◇ Simple installation and maintenance, with easy access to terminals, rotating diodes and coupling bolts.
- ◇ Built to conform with all leading industrial standards.

## ◆ Standards

XN industrial generators meet the requirements of BS5000 Part 3, VDE0530, UTE5100, NEMA MGt-22, CEMA, IEC34-1, CSA22.2 and AS1359.

## ◆ Electrical specification

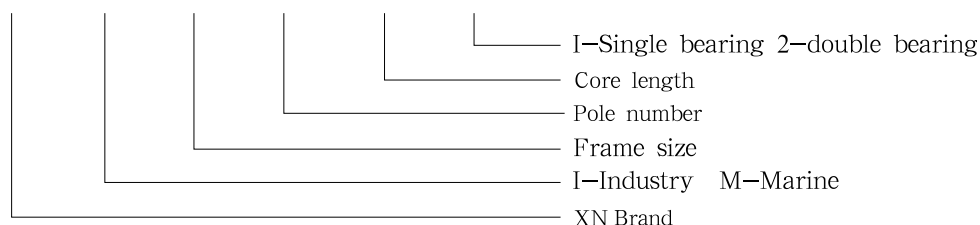
### EXCITATION SYSTEMS SX460& SX440 465 AVRS SX321

With these self-excited systems the main stator provides power via the automatic voltage regulator (AVR) to the exciter stator. The high efficiency semiconductors of the AVR ensure positive build up from initial low levels of residual voltage. The exciter rotor output is fed to the main rotor through a three phase full wave bridge rectifier. The rectifier is protected by a surge suppressor against surges-caused, for example, by short circuit or out-of-phase paralleling.

SX321/SX440AVR will support a range of electronic accessories, including a “droop” current Transformer (CT) to permit parallel operation with other ac generators.

### Product model definition

XN	I	16	4	C	2
XN	M	18	4	C	1
XN	I	22	4	C	1
XN	M	27	4	C	2
XN	I	4	4	C	1
XN	I	5	4	C	1
XN	I	6	4	C	1



## ◆ Insulation/Impregnation

### The insulation system is Class"H"

All wound components are impregnated with materials and processes designed specifically to provide protection against the harsh environments encountered in generator applications. Resin based materials are selected and developed to provide the high build required for static windings and the high mechanical strength required for rotating components.

### Windings & Electrical Performance

All generator stators are wound to 2/3 pitch. This eliminates triplen (3rd, 9th, 15th.....) harmonics on the voltage waveform and is found to be the optimum design for trouble-free supply of non-linear loads. The 2/3 pitch design avoids excessive neutral currents sometimes seen with higher winding pitches, when in parallel with the mains. A fully connected damper winding reduces oscillations during paralleling. This winding ,with the 2/3 pitch and carefully selected pole and tooth designs, ensures very low waveform distortion.

### TELEPHONE INTERFERENCE

THF( as defined by BS4999 Part 40 )is less than 2%. TIF (as defined by ASA C50.12)is less than 50.

### RADIO INTERFERENCE

The absence of brushgear and the high quality AVR ensure low levels of interference with radio transmissions. Additional RFI suppression may be supplied if required.

### TERMINALS & TERMINAL BOX

Standard generators are 3 phase reconnectable with 12 ends brought out to the terminals, which are mounted on a cover at the non-drive end of the generator. A sheet steel terminal box contains the AVR and provides ample space for customers's wiring and gland arrangements. It has removable panels for easy access.

## ◆ Physical characteristics

### Enclosure

IP23(NEMA1) is standard for all industrial and marine generators.

Giving drip proof protection of 60° from the vertical, Inlet air filters are ratings (5% derate )

### SHAFT & KEYS

All generator rotors are dynamically balanced to better than BS6861: Part 1 Grade 2.5 for minimum vibration in operation. Two bearing generators are balanced with a half key.

### ADAPTORS & COUPLINGS

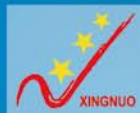
The XN generator: are available in single and two bearing construction to meet the SAE standard ,and also we can supply special adaptor.

Note: if SAE 5 is used on the XN18 then it is necessary to derate the generator output by 5%.

## ◆ System \ performance characteristic

	SX460	SX440	SX421	SX341	SX321
Voltage regulation	± 1.0%	± 1.0%	± 0.5%	± 1.0%	± 0.5%
Detection method	2phase	2phase	3phase	2phase	3phase
Voltage protection low speed	Standard	Standard	Standard	Standard	Standard
Load accept feature				Standard	Standard
50/60Hz Selection	Standard	Standard	Standard	Standard	Standard
Telephone disturbance rank (standard)	VDE'N'	VDE'N'	VDE'N'	VDE'N'	VDE'N'
Short-circuited electric current ability				300%	300%
Parallel operation (sagging installment)	OPTION	OPTION	OPTION	OPTION	OPTION
Manual voltage regulation	Standard	Standard	Standard	Standard	Standard
Power factor controller					Standard
Overvoltage protection			Standard		Standard
The voltage drops restores timing control					Standard
Current limiting function					Standard





# XINGNUO ELECTRIC

## XN162 XN164

### 3-PHASE INDUSTRY ALTERNATORS POWER



XN162	Three-phase H class temperature rise 125°C								Single-phase H class temperature rise 125°C							
	50Hz 3000rpm				60Hz 3600rpm				50Hz 3000rpm				60Hz 3600rpm			
Voltage	380	400	415	440	416	440	460	480	220	230	240	220	230	240		
Star—series																
Star—parallel	190	200	208	220	208	220	230	240	110	115	120	110	115	120		
△—Series	220	230	240	254	240	254	—	—								
XN162D Rated Capacity ( KVA)	12.5	12.5	12.5	12.0	14.7	15.6	15.6	15.6	8.4	8.4	8.4	10.0	10.0	10.0		
Rated Power (KW)	10.0	10.0	10.0	9.6	11.8	12.5	12.5	12.5	6.7	6.7	6.7	8.0	8.0	8.0		
Effici Ency (%)	72.4	73.3	74.0	75.0	71.1	71.9	72.8	73.5	67.3	67.9	68.4	64.5	65.3	66.0		
Power input (KW)	13.8	13.6	13.5	12.8	16.6	17.4	17.2	17.0	10.0	9.9	9.8	12.4	12.2	12.1		
XN162E Rated Capacity ( KVA)	15.0	15.0	15.0	14.5	17.8	18.8	18.8	18.8	10.0	10.0	10.0	12.4	12.4	12.4		
Rated Power (KW)	12.0	12.0	12.0	11.6	14.2	15.0	15.0	15.0	8.0	8.0	8.0	9.9	9.9	9.9		
Effici Ency (%)	76.3	77.0	77.5	78.2	75.1	75.8	76.5	77.0	71.2	71.7	72.0	68.8	69.5	70.1		
Power input (KW)	15.7	15.6	15.5	14.8	18.9	19.8	19.6	19.5	11.2	11.2	11.1	14.4	14.3	14.2		
XN162F Rated Capacity ( KVA)	17.5	17.5	17.5	17.0	20.8	21.9	21.9	21.9	11.8	11.8	11.8	14.4	14.4	14.4		
Rated Power (KW)	14.0	14.0	14.0	13.6	16.6	17.5	17.5	17.5	9.4	9.4	9.4	11.5	11.5	11.5		
Effici Ency (%)	78.5	79.1	79.6	80.2	77.4	78.1	78.7	79.2	73.6	74.0	74.3	71.4	72.1	72.6		
Power input (KW)	17.8	17.7	17.6	16.9	21.4	22.4	22.2	22.1	12.8	12.8	12.7	16.1	16.0	15.9		
XN162G Rated Capacity ( KVA)	25.0	25.0	25.0	24.0	29.6	31.3	31.3	31.3	16.8	16.8	16.8	20.6	20.6	20.6		
Rated Power (KW)	20.0	20.0	20.0	19.2	23.7	25.0	25.0	25.0	13.4	13.4	13.4	16.5	16.5	16.5		
Effici Ency (%)	80.7	81.4	81.9	82.6	80.0	80.6	81.2	81.7	76.7	77.1	77.4	74.7	75.3	75.9		
Power input (KW)	24.8	24.6	24.4	23.2	29.6	31.0	30.8	30.6	17.5	17.4	17.4	22.1	21.9	21.7		

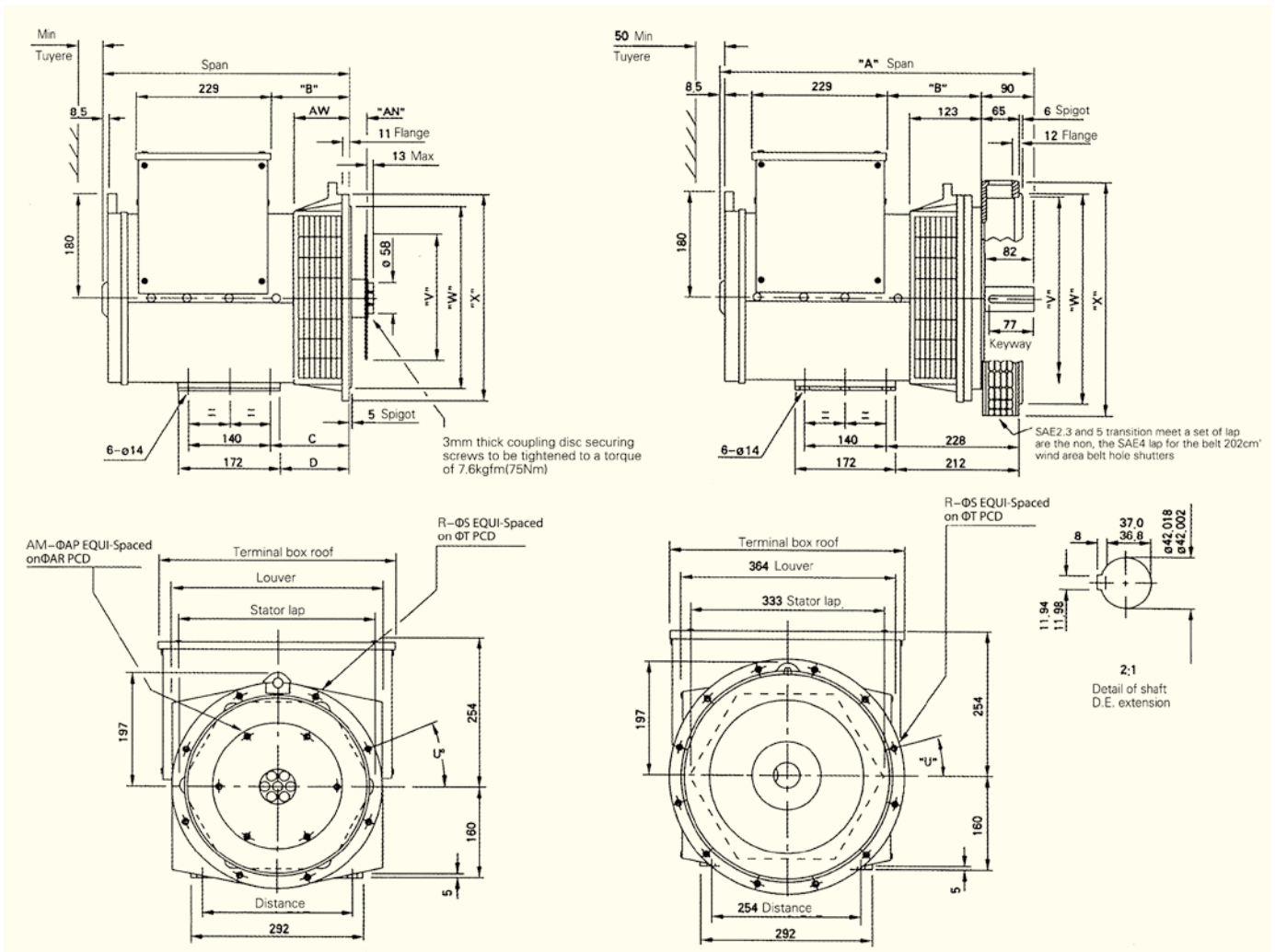
XN164	Three-phase H class temperature rise (125°C )								Single-phase H class temperature rise(125°C)							
	50Hz 1500rpm				60Hz 1800rpm				50Hz 1500rpm				60Hz 1800rpm			
Voltage	380	400	415	440	416	440	460	480	220	230	240	220	230	240		
Star—series																
Star—parallel	190	200	208	220	208	220	230	240	110	115	120	110	115	120		
△—Series	220	230	240	254	240	254	—	—								
XN164A Rated Capacity ( KVA)	8.1	8.1	8.1	8.1	9.6	10.2	10.2	10.2	5.4	5.4	5.4	6.4	6.4	6.4		
Rated Power (KW)	6.5	6.5	6.5	6.5	7.7	8.2	8.2	8.2	4.3	4.3	4.3	5.1	5.1	5.1		
Effici Ency (%)	75.6	76.2	76.6	77.1	75.8	76.3	76.9	77.4	69.6	69.6	70.0	69.5	70.1	70.6		
Power input (KW)	8.6	8.5	8.5	8.4	10.1	10.7	10.6	10.5	6.2	6.2	6.2	7.4	7.3	7.3		
XN164B Rated Capacity ( KVA)	11.0	11.0	11.0	11.0	13.0	13.8	13.8	13.8	7.4	7.4	7.4	8.8	8.8	8.8		
Rated Power (KW)	8.8	8.8	8.8	8.8	10.4	11.0	11.0	11.0	5.9	5.9	5.9	7.0	7.0	7.0		
Effici Ency (%)	78.8	79.4	79.8	80.2	79.0	79.4	80.0	80.5	73.5	73.8	73.9	73.3	73.9	74.4		
Power input (KW)	11.2	11.1	11.0	11.0	13.2	13.9	13.8	13.7	8.1	8.0	8.0	9.6	9.5	9.5		
XN164C Rated Capacity ( KVA)	13.5	13.5	13.5	13.5	16.0	16.9	16.9	16.9	9.0	9.0	9.0	10.8	10.8	10.8		
Rated Power (KW)	10.8	10.8	10.8	10.8	12.8	13.5	13.5	13.5	7.2	7.2	7.2	8.6	8.6	8.6		
Effici Ency (%)	80.0	80.7	81.0	81.5	80.3	80.7	81.3	81.7	75.2	75.5	75.7	75.0	75.6	76.0		
Power input (KW)	13.5	13.4	13.3	13.3	15.9	16.7	16.6	16.5	9.6	9.5	9.5	11.4	11.4	11.4		
XN164D Rated Capacity ( KVA)	16.0	16.0	16.0	16.0	18.9	20.0	20.0	20.0	10.8	10.8	10.8	13.5	13.5	13.5		
Rated Power (KW)	12.8	12.8	12.8	12.8	15.1	16.0	16.0	16.0	8.6	8.6	8.6	10.8	10.8	10.8		
Effici Ency (%)	81.0	81.6	81.9	82.4	81.2	81.7	82.2	82.7	76.5	76.7	76.9	76.4	76.9	77.4		
Power input (KW)	15.8	15.7	15.6	15.5	18.6	19.6	19.5	19.4	11.2	11.1	11.1	13.1	13.0	12.9		

Note: © TAIL land use the rated value are based on the ambient temperature 40°C, in the elevation 1000 meters.

© Arranges in order all voltages may obtain from the single wide winding, also namely (three-phase) and 4 terminals (single-phase) reorganizes through 12 terminals may obtain.

© Other special voltage range can be met by XINGNUO company.

# **XN162/164** OUTLINE DRAWING



DIMENSION		
TYPE	A	B
XN162D	364.5	93
XN162E	364.5	93
XN162F	416.5	132
XN162G	416.5	132
XN164A	364.5	93
XN164B	364.5	93
XN164C	391.5	107
XN164D	391.5	107

COUPLING DISC					
S.A.E.NO.	AN	AM	AP	AR	V
6.5	30.16	6	8.7	200.0	215.8
7.5	30.16	8	8.7	222.2	241.2
8	61.9	6	11	244.5	263.4
10	53.98	8	11	295.5	314.2

ADAPTOR									
S.A.E.NO.	AW	R	S	T	U"	W	X	C	D
2	132.3	12	11	466.7	15	447.6	489	172	156
3	105	8	11	428.6	15	409.5	451	145	129
4	93	8	11	381.0	15	361.9	402	133	117
5	93	8	11	333.3	22.5	314.3	356	133	117
6*	124.7	8	11	285.8	22.5	266.7	308	164.7	148.7

© Note: \*SAE6 must add separately thick 31.7mm the transition board, therefore

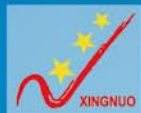
"A"the size also correspondingly increases 31.7mm

DIMENSION		
TYPE	A	B
XN162D	484.5	123
XN162E	484.5	123
XN162F	536.5	162
XN162G	536.5	162
XN164A	484.5	123
XN164B	484.5	123
XN164C	511.5	137
XN164D	511.5	137

ADAPTOR							
S.A.E.NO.	R	S	T	U"	V	W	X
2	12	11	466.7	15	432	447.6	495
3	12	11	428.6	15	396	409.5	451
4	12	11	381.0	15	352	361.9	403
5	8	11	333.3	22.5	301	314.3	356

TRANSPORTATION DATA			
TYPE	NET WEIGHT(kg)	GROSS WEIGHT(kg)	PACKAGE SIZE(cm)
XN162D	83	93	64 × 54 × 72
XN162E	94	104	64 × 54 × 72
XN162F	101	111	64 × 54 × 72
XN162G	117	127	64 × 54 × 72
XN164A	85	95	84 × 59 × 75
XN164B	90	102	84 × 59 × 75
XN164C	96	110	84 × 59 × 75
XN164D	99	116	84 × 59 × 75

© All drawings and weight data are just for reference,please contact XINGNUO company if there is any doubt.



# XINGNUO ELECTRIC

## XN182 XN184

### 3-PHASE INDUSTRY ALTERNATORS POWER



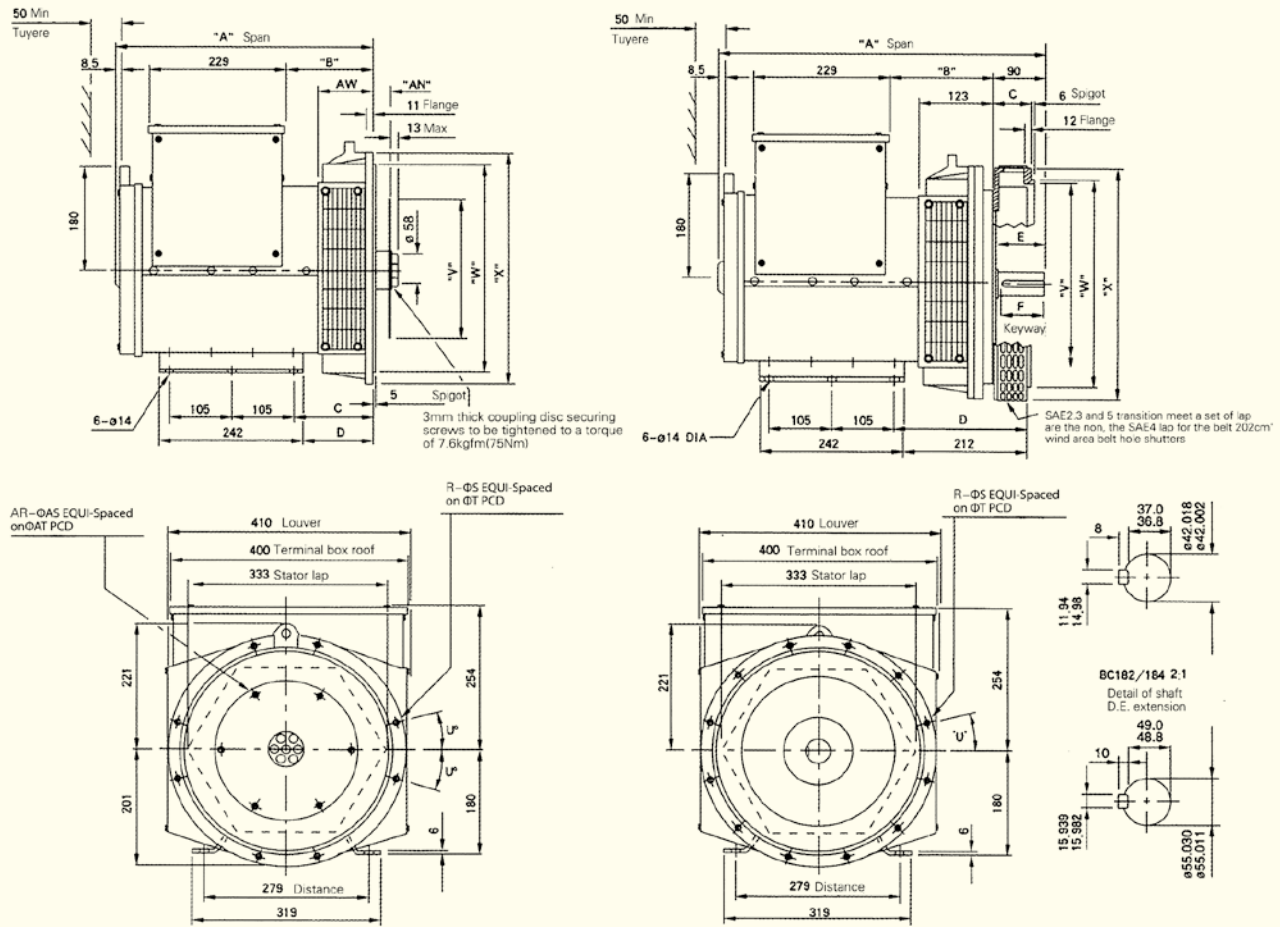
XN182	Three-phase H class temperature rise 125°C								Single-phase H class temperature rise 125°C					
Voltage	50Hz 3000rpm				60Hz 3600rpm				50Hz 3000rpm		60Hz 3600rpm			
Star—series	380	400	415	440	416	440	460	480	220	230	240	220	230	240
Star—parallel	190	200	208	220	208	220	230	240	110	115	120	110	115	120
△—Series	220	230	240	254	240	254	266	277						
XN182H Rated Capacity ( KVA)	30.0	30.0	30.0	29.0	33.0	35.0	35.0	35.0	20.0	20.0	20.0	24.8	24.8	24.8
Rated Power (KW)	24.0	24.0	24.0	23.2	26.4	28.0	28.0	28.0	16.0	16.0	16.0	19.8	19.8	19.8
Effici Ency (%)	81.2	81.9	82.3	83.0	80.3	80.9	81.5	82.0	77.2	77.6	77.9	75.0	75.6	76.2
Power input (KW)	29.5	29.3	29.2	28.0	32.9	34.6	34.3	34.1	20.7	20.6	20.5	26.5	26.2	26.0
XN182J Rated Capacity ( KVA)	35.0	35.0	35.0	34.0	37.8	40.0	40.0	40.0	23.5	23.5	23.5	28.9	28.9	28.9
Rated Power (KW)	28.0	28.0	28.0	27.2	30.2	32.0	32.0	32.0	18.8	18.8	18.8	23.1	23.1	23.1
Effici Ency (%)	82.3	83.0	83.4	84.0	81.5	82.1	82.6	83.1	78.5	78.9	79.2	76.5	77.1	77.6
Power input (KW)	34.0	33.8	33.6	32.4	37.1	39.0	38.7	38.5	24.0	23.8	23.7	30.2	30.0	29.8
XN182K Rated Capacity ( KVA)	37.5	37.5	37.5	36.3	44.3	46.9	46.9	46.9	25.0	25.0	25.0	31.0	31.0	31.0
Rated Power (KW)	30.0	30.0	30.0	29.0	35.4	37.5	37.5	37.2	20.0	20.0	20.0	24.8	24.8	24.8
Effici Ency (%)	84.3	84.7	85.0	85.4	83.5	84.0	84.4	84.3	80.4	80.6	80.8	78.8	79.2	79.6
Power input (KW)	35.6	35.4	35.3	34.0	42.5	44.7	44.5	44.3	24.9	24.8	24.8	31.5	31.3	31.1

XN184	Three-phase H class temperature rise (125°C )								Single-phase H class temperature rise(125°C)					
Voltage	50Hz 1500rpm				60Hz 1800rpm				50Hz 1500rpm		60Hz 1800rpm			
Star—series	380	400	415	440	416	440	460	480	220	230	240	220	230	240
Star—parallel	190	200	208	220	208	220	230	240	110	115	120	110	115	120
△—Series	220	230	240	254	240	254	266	277	346					
XN184E Rated Capacity ( KVA)	22.5	22.5	22.5	22.5	27.5	28.8	28.8	30.0	30.0	15.0	15.0	15.0	18.4	18.4
Rated Power (KW)	18.0	18.0	18.0	18.0	22.0	23.0	23.0	24.0	24.0	12.0	12.0	12.0	14.7	14.7
Effici Ency (%)	84.3	84.9	85.3	85.8	83.8	84.3	84.9	85.2	85.6	81.3	81.7	81.9	80.6	81.1
Power input (KW)	21.4	21.2	21.1	21.0	26.2	27.1	27.1	28.2	28.0	14.8	14.7	14.6	18.4	18.1
XN184F Rated Capacity ( KVA)	27.5	27.5	27.5	27.5	32.5	34.4	34.4	35.0	35.0	18.5	18.5	18.5	21.9	21.9
Rated Power (KW)	22.0	22.0	22.0	22.0	26.0	27.5	27.5	28.0	28.0	14.8	14.8	14.8	17.5	17.5
Effici Ency (%)	85.7	86.2	86.5	87.0	85.5	85.9	86.4	86.7	87.0	82.7	83.0	83.3	81.9	82.8
Power input (KW)	25.7	25.5	25.4	25.3	30.4	32.0	31.9	32.3	32.2	17.9	17.8	17.8	21.4	21.2
XN184G Rated Capacity ( KVA)	31.3	31.3	31.3	31.3	35.0	37.5	37.5	37.5	37.5	21.0	21.0	21.0	25.0	25.0
Rated Power (KW)	25.0	25.0	25.0	25.0	28.0	30.0	30.0	30.0	30.0	16.8	16.8	16.8	20.0	20.0
Effici Ency (%)	86.6	87.0	87.3	87.6	86.7	87.0	87.3	87.6	87.8	83.7	83.9	83.9	83.0	83.8
Power input (KW)	28.9	28.8	28.7	28.6	32.3	34.5	34.4	34.2	34.2	20.1	20.0	20.0	24.1	23.9
XN184H Rated Capacity ( KVA)	37.5	37.5	37.5	37.5	44.3	46.9	46.9	46.9	46.8	25.0	25.0	25.0	31.3	31.3
Rated Power (KW)	30.0	30.0	30.0	30.0	35.4	37.5	37.5	37.5	37.4	20.0	20.0	20.0	25.0	25.0
Effici Ency (%)	86.2	86.6	86.9	87.2	85.4	85.3	85.6	85.9	85.9	82.9	82.9	82.9	82.8	82.8
Power input (KW)	34.8	34.7	34.6	34.5	41.5	44.0	43.9	43.7	43.7	24.2	24.2	24.2	30.2	30.2
XN184J Rated Capacity ( KVA)	40.0	42.5	40.0	40.0	47.3	50.0	50.0	50.0	55.0	28.0	28.0	28.0	35.0	35.0
Rated Power (KW)	32.0	34.0	32.0	32.0	37.8	40.0	40.0	40.0	44.0	22.4	22.4	22.4	28.0	28.0
Effici Ency (%)	87.6	86.6	87.1	87.5	85.9	85.8	86.1	86.4	86.4	83.0	83.0	83.0	82.9	83.0
Power input (KW)	37.0	39.3	36.7	36.6	44.0	46.7	46.5	46.3	46.3	27.0	27.0	27.0	33.8	33.8

© All drawings and weight data are just for reference, please contact XINGNUO company if there is any doubt.



# **XN182/184** OUTLINE DRAWING



COUPLING DISC					
S.A.E.No.	AN	AR	AS	AT	V
6.5△	30.16	6	8.7	200.0	215.8
7.5△	30.16	8	8.7	222.2	241.2
8	61.9	6	11	244.5	263.4
10	53.98	8	11	295.3	314.2
11.5	39.68	8	11	333.4	352.3
14△	25.4	8	13.5	438.2	466.5

◎ Note:△SAE14 is only suitable for the XN184H/J iron core; SAE6.5, 7.5 are not suitable for the XN184H/J iron core

DIMENSION						
TYPE	A	B	C	D	E	F
XN182H	601.5	227	65	228	82	77
XN182J	601.5	227	65	228	82	77
XN182K	641.5	267	65	228	82	77
XN184E	551.5	177	65	228	82	77
XN184F	641.5	267	65	228	82	77
XN184G	641.5	267	65	228	82	77
XN184H	641.5	267	105	271	110	100
XN184J	641.5	267	105	271	110	100

ADAPTOR								
S.A.E.No.	AW	R	S	T	U°	W	X	D
2	132.3	12	11	466.7	15	447.6	489	156
3	105	8	11	428.6	15	409.5	451	129
4	93	8	11	381.0	15	361.9	402	117
5	93	8	11	333.3	22.5	314.3	356	117
6*	124.7	8	11	285.8	22.5	266.7	308	148.7

ADAPTOR(Single)(It is only suitable for the BC184H/J iron core )								
S.A.E.No.	C	D	R	S	T	W	X	
1	220.3	204.3	12	12.7	530.2	511.1	553	
2	206	190	12	11	466.7	447.6	490	
3	206	190	12	11	428.6	409.5	451	
4	206	190	12	11	381	361.9	453	

TRANSPORTATION DATA				PACKAGE SIZE(cm)	
TYPE	NET WEIGHT(kg)	GROSS WEIGHT(kg)	A*	B	
XN182H	130	140	481.5	197	
XN182J	143	153	481.5	197	
XN182K	159	169	521.5	237	
XN184E	120	133	431.5	147	
XN184F	150	156	521.5	237	
XN184G	156	172	521.5	237	
XN184H	216	226	654.5	325	
XN184J	226	236	654.5	325	

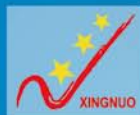
◎ Note: \*SAE6 must add separately thick 31.7mm the transition board, therefore"A"the size also correspondingly increases 31.7mm.

\*\* SAE3 8 holes distribute in 12 division circumferences.

ADAPTOR							
S.A.E.No.	R	S	T	U°	V	W	X
1	12	12.7	530.2	15	500	511.17	553
2	12	11	466.7	15	432	447.6	495
3	12	11	428.6	15	396	409.5	451
4	12	11	381.0	15	352	361.9	403
5	8	11	333.3	22.5	301	301	356

TRANSPORTATION DATA			
TYPE	NET WEIGHT(kg)	GROSS WEIGHT(kg)	PACKAGE SIZE(cm)
XN182H	130	140	64 × 54 × 72
XN182J	143	153	64 × 54 × 72
XN182K	159	169	64 × 54 × 72
XN184E	120	133	64 × 54 × 72
XN184F	150	156	84 × 59 × 75
XN184G	156	172	84 × 59 × 75
XN184H	216	226	84 × 59 × 75
XN184J	226	236	84 × 59 × 75

◎ All drawings and weight data are just for reference,please contact XINGNUO company if there is any doubt.



# XINGNUO ELECTRIC

## XN224

### 3-PHASE INDUSTRY ALTERNATORS POWER



XN224	INDUSTRY										MARINE									
	50Hz 1500rpm					60Hz 1800rpm					50Hz 1500rpm					60Hz 1800rpm				
	H (125K)					H (125K)					H (115K)					H (115K)				
Voltage	380	400	415	440	416	440	450	460	480	380	400	415	440	416	440	450	460	480		
Star—series	190	200	208	220	208	220	225	230	240	190	200	208	220	208	220	225	230	240		
Star—parallel	220	230	240	254	240	254	260	266	277	220	230	240	254	240	254	260	266	277		
△—Series																				
XN224C Rated Capacity (KVA)	42.5	42.5	42.5	40	50	52.5	52.5	52.5	55	37.5	37.5	37.5	35	43.8	43.8	43.8	43.8	43.8		
Rated Power (KW)	34	34	34	32	40	42	42	42	44	30	30	30	28	35	35	35	35	35		
Efficiency (%)	86.5	87.1	87.4	88.2	86.8	87.2	87.5	87.7	87.9	87.1	87.6	87.8	88.5	87.6	88	88.2	88.4	88.6		
Power input (KW)	39.3	39	39.9	36.3	46.1	48.2	48	47.9	50.1	34.4	34.2	34.2	31.6	40	39.8	39.7	39.6	39.5		
XN224D Rated Capacity (KVA)	50	50	50	48	60	62.5	62.5	62.5	65	43.8	43.8	43.8	40	50	52.5	56.3	56.3	56.3		
Rated Power (KW)	40	40	40	38.4	48	50	50	50	52	35	35	3	32	40	42	45	45	45		
Efficiency (%)	87.8	88.2	88.5	89	87.8	88.2	88.4	88.6	88.8	88.2	88.6	88.9	89.2	88.6	88.8	88.9	89.1	89.3		
Power input (KW)	45.6	45.4	45.2	43.1	54.7	56.7	56.6	56.4	58.6	39.7	39.5	39.4	35.9	45.1	47.3	50.6	50.5	50.4		
XN224E Rated Capacity (KVA)	62.5	62.5	62.5	62.5	75	75	75	75	75	50	50	50	50	62.5	62.5	62.5	62.5	62.5		
Rated Power (KW)	50	50	50	50	60	60	60	60	60	40	40	40	40	50	50	50	50	50		
Efficiency (%)	88.1	88.6	88.9	89.5	88.5	88.9	89.1	89.2	89.4	88.9	89.2	89.5	89.8	88.9	89.3	89.6	89.8	89.9		
Power input (KW)	56.7	56.4	56.2	55.8	67.7	67.4	67.3	67.2	67.1	45	44.8	44.7	44.5	56.2	56	55.8	55.7	55.6		
XN224F Rated Capacity (KVA)	75	75	75	75	93.8	93.8	93.8	93.8	93.8	62.5	62.5	62.5	62.5	75	75	75	75	81.3		
Rated Power (KW)	60	60	60	60	75	75	75	75	75	50	50	50	50	60	60	60	60	65		
Efficiency (%)	89.6	90	90.2	90.6	89.9	90.2	90.4	90.5	90.5	90	90.2	90.5	90.7	90.2	90.8	90.9	91	91		
Power input (KW)	66.9	66.6	66.5	66.2	83.4	83.1	82.9	82.8	82.9	55.6	55.4	55.2	55.1	66.5	66.1	66	65.9	71.4		
XN224G Rated Capacity (KVA)	87.5	87.5	87.5	87.5	100	100	100	100	104	75	75	75	65	87.5	87.5	87.8	93.8	93.8		
Rated Power (KW)	70	70	70	70	80	80	80	80	83	60	60	60	52	70	70	70	75	75		
Efficiency (%)	89.9	90.2	90.4	90.8	90.4	90.6	90.7	90.8	91	90.4	90.6	90.8	91.1	90.6	91	91	91	91.2		
Power input (KW)	77.8	77.6	77.4	77.1	88.4	88.3	88.2	88.4	91.3	66.4	66.2	66.1	57.1	77.3	76.9	76.9	82.4	82.2		

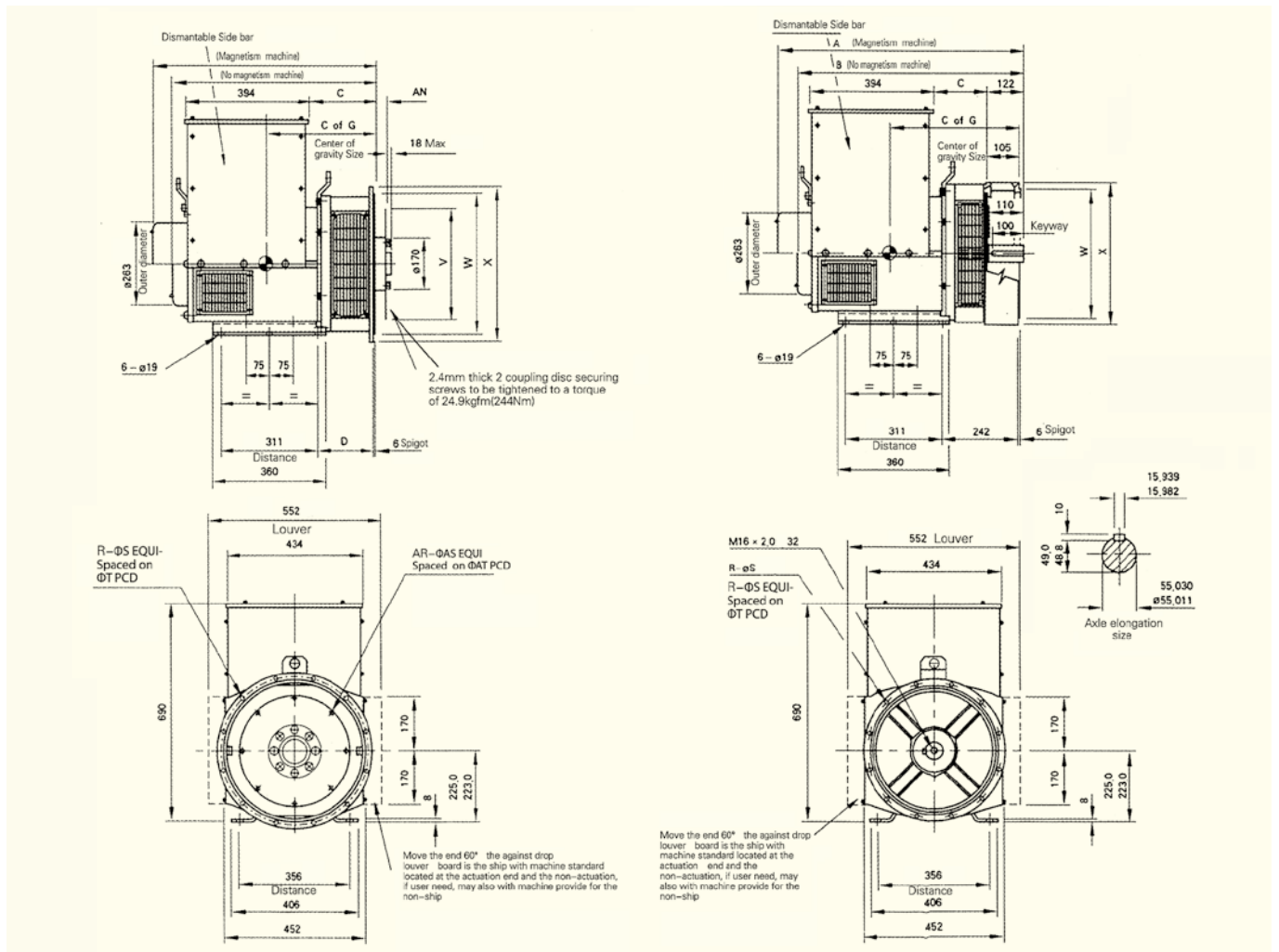
Note: ⦿ TAIL land use the rated value are based on the ambient temperature 40℃, in the elevation 1000 meters.

⦿ The ship uses the rated value is based on the ambient temperature 45℃, the continuous running, all generators are 4 extremely.

⦿ Arranges in order all voltages may obtain from the single wide winding, also namely may obtain through 12 going beyond a line dignified groups.

⦿ Other special voltage range can be met by XINGNUO company

## XN224 OUTLINE DRAWING



SAE1	DIMENSION				
	TYPE	A	B	C	C of G
	XN224C	724.3	661.3	224.3	323
	XN224D	724.3	661.3	224.3	333
	XN224E	814.3	751.3	314.3	348
	XN224F	814.3	751.3	314.3	358
	XN224G	859.3	796.3	359.3	373
SAE2&3	XN224C	710	647	210	311
	XN224D	710	647	210	321
	XN224E	800	737	300	336
	XN224F	800	737	300	346
	XN224G	845	782	345	361

COUPLING DISC					
S.A.E.NO.	AN	AR	AS	AT	V
8	61.9	6	10.3	244.4	263.4
10	53.98	8	10.3	295.3	314.2
11.5	39.68	8	10.3	333.3	352.3
14	25.40	8	13.5	438.2	466.6

ADAPTOR						
S.A.E.NO.	D	R	S	T	W	X
1	191.3	12	12.7	530.2	511.1	533
2	177	12	11	466.7	447.6	490
3	177	12	11	428.6	409.5	451
4	177	12	11	381.0	361.9	453

TRANSPORTATION DATA			
TYPE	NET WEIGHT(kg)	GROSS WEIGHT(kg)	PACKAGE SIZE(cm)
XN224C	235	255	108 × 66 × 94
XN224D	250	270	108 × 66 × 94
XN224E	270	290	108 × 66 × 94
XN224F	310	330	108 × 66 × 94
XN224G	350	370	108 × 66 × 94

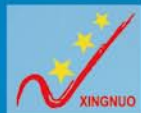
DIMENSION				
TYPE	A	B	C	C of G
XN224C	792	729	170	368
XN224D	792	729	170	378
XN224E	882	819	260	393
XN224F	882	819	260	403
XN224G	972	864	305	418

ADAPTOR					
S.A.E.NO.	R	S	T	W	X
1	12	12.7	530.2	511.1	553
2	12	11	466.7	447.6	490
3	12	11	428.6	409.5	451
4	12	11	381.0	361.9	403
5	8	11	333.3	314.3	356

TRANSPORTATION DATA			
TYPE	NET WEIGHT(kg)	GROSS WEIGHT(kg)	PACKAGE SIZE(cm)
XN224C	250	275	108 × 66 × 94
XN224D	270	295	108 × 66 × 94
XN224E	290	315	108 × 66 × 94
XN224F	320	345	108 × 66 × 94
XN224G	360	385	108 × 66 × 94

© All drawings and weight data are just for reference, please contact XINGNUO company if there is any doubt.





# XINGNUO ELECTRIC

## XN274

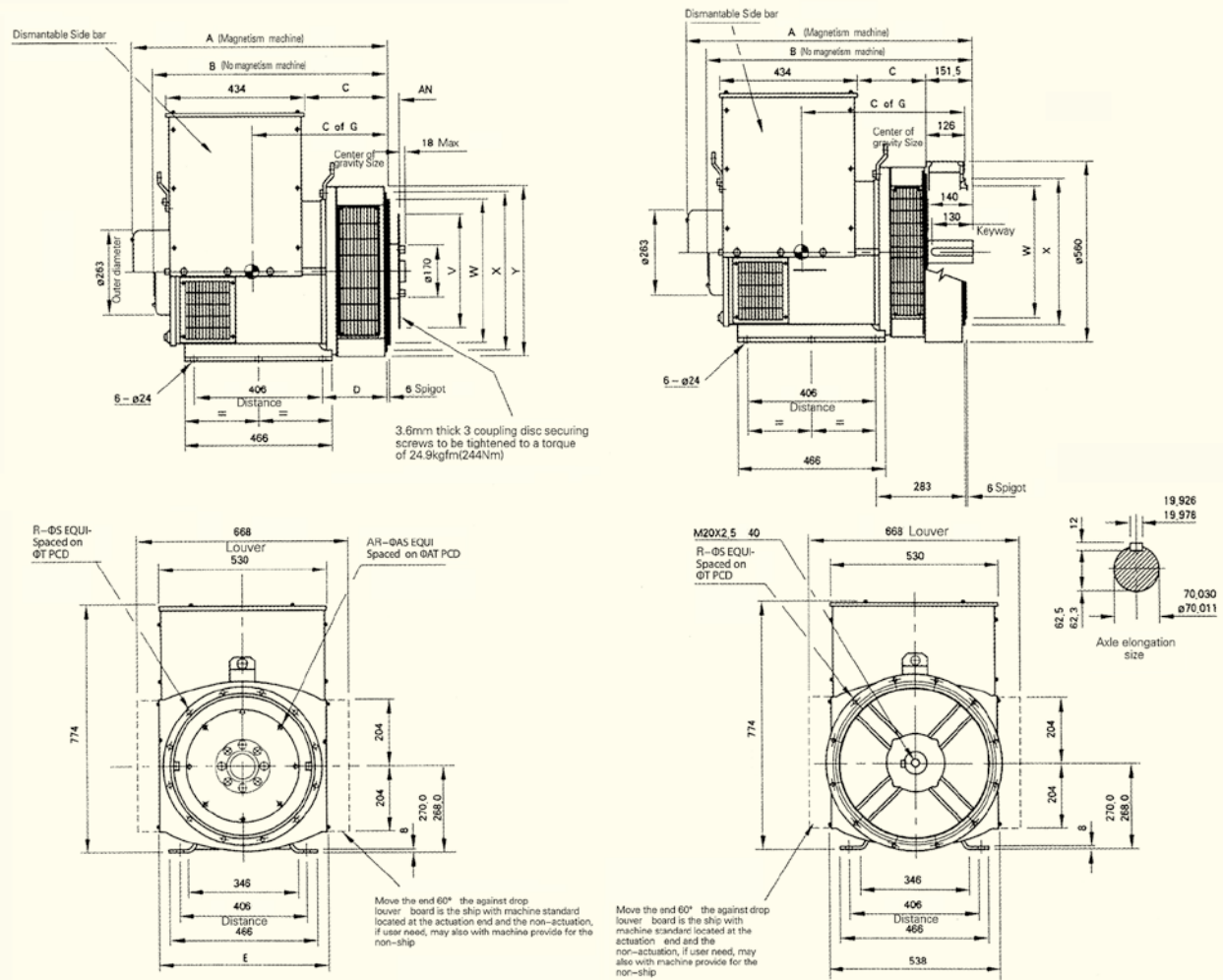
### 3-PHASE INDUSTRY ALTERNATORS POWER



XN274	INDUSTRY									MARINE								
	50Hz 1500rpm				60Hz 1800rpm					50Hz 1500rpm				60Hz 1800rpm				
	H class (125K)				H class (125K)					H class (115K)				H class (115K)				
Voltage	380	400	415	440	416	440	450	460	480	380	400	415	440	416	440	450	460	480
Star—series	190	200	208	220	208	220	225	230	240	190	200	208	220	208	220	225	230	240
Star—parallel	220	230	240	254	240	254	260	266	277	220	230	240	254	240	254	260	266	277
△—Series																		
XN274C Rated Capacity (KVA)	100	100	100	92.5	113	118	118	118	125	81.3	81.3	81.3	75	93.8	106	106	106	113
Rated Power (KW)	80	80	80	74	90	94	94	94	100	65	65	65	60	75	85	85	85	90
Efficiency (%)	89.8	90.4	90.7	91.4	90	90.4	90.7	90.9	91	90.8	91.1	91.3	91.8	90.8	89.9	89.9	89.9	91.3
Power input (KW)	89.1	88.5	88.2	81	100	104	104	103	110	71.6	71.4	71.2	65.4	82.6	94.5	94.5	94.5	98.6
XN274D Rated Capacity (KVA)	125	125	125	125	156	156	156	156	156	100	100	100	87.5	119	119	125	125	125
Rated Power (KW)	100	100	100	100	125	125	125	125	125	80	80	80	70	95	95	100	100	100
Efficiency (%)	90.3	90.8	91	91.6	90.4	90.7	90.9	91.1	91.2	90.7	91.1	91.4	92	90.8	91.2	91.3	91.4	91.7
Power input (KW)	110	110	109	109	138	138	137	137	137	88.2	87.8	87.5	76.1	105	104	110	109	109
XN274E Rated Capacity (KVA)	140	140	140	130	160	168	168	168	179	125	125	125	113	138	138	138	144	144
Rated Power (KW)	112	112	112	104	128	134	134	134	143	100	100	100	90	110	110	110	115	115
Efficiency (%)	91.3	91.7	92	92.5	91.4	91.7	91.9	92	92.1	91.7	92.1	92.3	92.7	91.9	92.2	92.4	92.6	92.7
Power input (KW)	123	122	122	112	140	146	146	146	155	109	109	108	97.1	120	119	119	124	124
XN274F Rated Capacity (KVA)	160	160	160	150	181	190	190	190	206	144	144	144	125	163	163	169	169	169
Rated Power (KW)	128	128	128	120	145	152	152	152	165	115	115	115	100	130	130	135	135	135
Efficiency (%)	91.9	92.3	92.5	93	92	92.3	92.5	92.6	92.6	92.2	92.6	92.8	93	92.2	92.7	92.7	92.9	93.1
Power input (KW)	139	139	138	129	158	165	164	164	178	125	124	124	108	141	140	146	145	145
XN274G Rated Capacity (KVA)	187.5	187.5	187.5	187.5	225	225	225	225	225	156	156	156	150	188	188	188	188	200
Rated Power (KW)	150	150	150	150	180	180	180	180	180	125	125	125	120	150	150	150	150	160
Efficiency (%)	92.2	92.5	92.7	93	92.2	92.4	92.6	92.7	92.8	92.5	92.8	93	93.2	92.3	92.7	92.9	93	93
Power input (KW)	163	162	162	161	195	195	194	194	194	135	135	134	129	163	162	162	161	172
XN274H Rated Capacity (KVA)	200	200	200	190	238	245	245	245	255	175	175	175	163	219	225	225	225	231
Rated Power (KW)	160	160	160	152	190	196	196	196	204	140	140	140	130	175	180	180	180	185
Efficiency (%)	93	93.3	93.5	93.8	92.9	93.2	93.4	93.5	93.6	93.3	93.6	93.7	93.9	93.1	93.2	93.4	93.5	93.6
Power input (KW)	172	171	171	162	205	210	210	210	218	150	150	149	138	188	193	193	193	198

⊗ All drawings and weight data are just for reference, please contact XINGNUO company if there is any doubt.

# XN274 OUTLINE DRAWING



SAE1	DIMENSION					
	TYPE	A	B	C	E	C of G
SAE1	XN274C	813.3	750.3	274.3	554	365
	XN274D	813.3	750.3	274.3	554	375
	XN274E	928.3	865.3	389.3	554	390
	XN274F	928.3	865.3	389.3	554	415
	XN274G	978.3	915.3	439.3	554	435
	XN274H	1018.3	955.3	479.3	554	455
SAE2 3&4	XN274C	799	736	260	554	398
	XN274D	799	736	260	554	422
	XN274E	914	851	375	554	489
	XN274F	914	851	375	554	527
	XN274G	964	904	425	554	579
	XN274H	1004	941	465	554	625

COUPLING DISC					
S.A.E.NO.	AN	AR	AS	AT	V
10	59.98	8	10.3	295.3	314.2
11.5	39.68	8	10.3	333.3	352.3
14	25.40	8	13.5	438.2	466.6

ADAPTOR							
S.A.E.NO.	D	R	S	T	W	X	Y
1	216.3	12	12.7	530.2	511.1	533	580
2	202	12	11	466.7	447.6	490	530
3	202	12	11	428.6	409.5	451	530

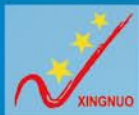
TRANSPORTATION DATA			
TYPE	NET WEIGHT(kg)	GROSS WEIGHT(kg)	PACKAGE SIZE(cm)
XN274C	385	415	125 × 76 × 102
XN274D	405	435	125 × 76 × 102
XN274E	455	485	125 × 76 × 102
XN274F	500	530	125 × 76 × 102
XN274G	550	580	125 × 76 × 102
XN274H	600	630	125 × 76 × 102

DIMENSION				
TYPE	A	B	C	C of G
XN274C	905	842	215	420
XN274D	905	842	215	430
XN274E	1020	957	330	445
XN274F	1020	957	330	475
XN274G	1070	1007	380	490
XN274H	1110	1047	420	510

ADAPTOR					
S.A.E.NO.	D	S	T	W	X
1	12	12.7	530.2	511.1	533
2	12	11	466.7	447.6	490
3	12	11	428.6	409.5	451

TRANSPORTATION DATA			
TYPE	NET WEIGHT(kg)	GROSS WEIGHT(kg)	PACKAGE SIZE(cm)
XN274C	395	435	125 × 76 × 102
XN274D	420	460	125 × 76 × 102
XN274E	470	510	125 × 76 × 102
XN274F	510	550	125 × 76 × 102
XN274G	560	600	125 × 76 × 102
XN274H	610	650	125 × 76 × 102

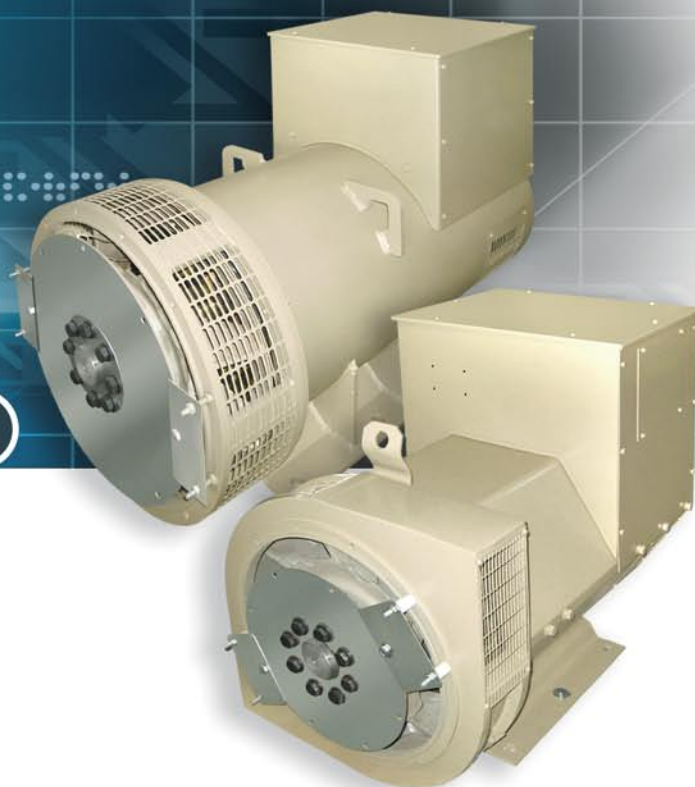
© All drawings and weight data are just for reference, please contact XINGNUO company if there is any doubt.



# XINGNUO ELECTRIC

## XN274J/K

### 3-PHASE INDUSTRY ALTERNATORS POWER



XN274J/K

XN274J/K																			
		50Hz(1500 rpm)									60Hz(1800 rpm)								
Ambinent		40°C(C)			40°C(Pook)			27°C(Pook)			40°C(C)			40°C(Pook)			27°C(Pook)		
Temp.Rise		125°C(C)			150°C(ST)			163°C(ST)			125°C(C)			150°C(ST)			163°C(ST)		
Voltage		380	400	415	380	400	415	380	400	415	416	440	480	416	440	480	416	440	480
XN274J	RATED CAPACITY	230	230	230	250	250	250	260	260	260	269	281	300	288	300	319	294	306	325
	RATED POWER	184	184	184	200	200	200	208	208	208	215.2	224.8	240	230.4	240	255.2	235.2	244.8	260
	EFFICIENCY	92.4	92.6	92.6	92.1	92.2	92.3	91.8	92.0	92.1	92.8	92.8	92.8	92.5	92.5	92.5	92.4	92.4	92.4
XN274K	RATED CAPACITY	250	250	250	265	265	265	275	275	275	291	299	312.5	304	312.5	331.3	312	320	343.8
	RATED POWER	200	200	200	212	212	212	220	220	220	232.8	239.2	250	243.2	250	265	249.6	256	275
	EFFICIENCY	92.5	92.7	92.8	92.2	92.4	92.6	92.0	92.2	92.4	92.6	92.7	92.9	92.4	92.6	92.7	92.2	92.4	92.5

Note: ◎ TALL land use the rated value are based on the ambient temperature 40°C, in the elevation 1000 meters.

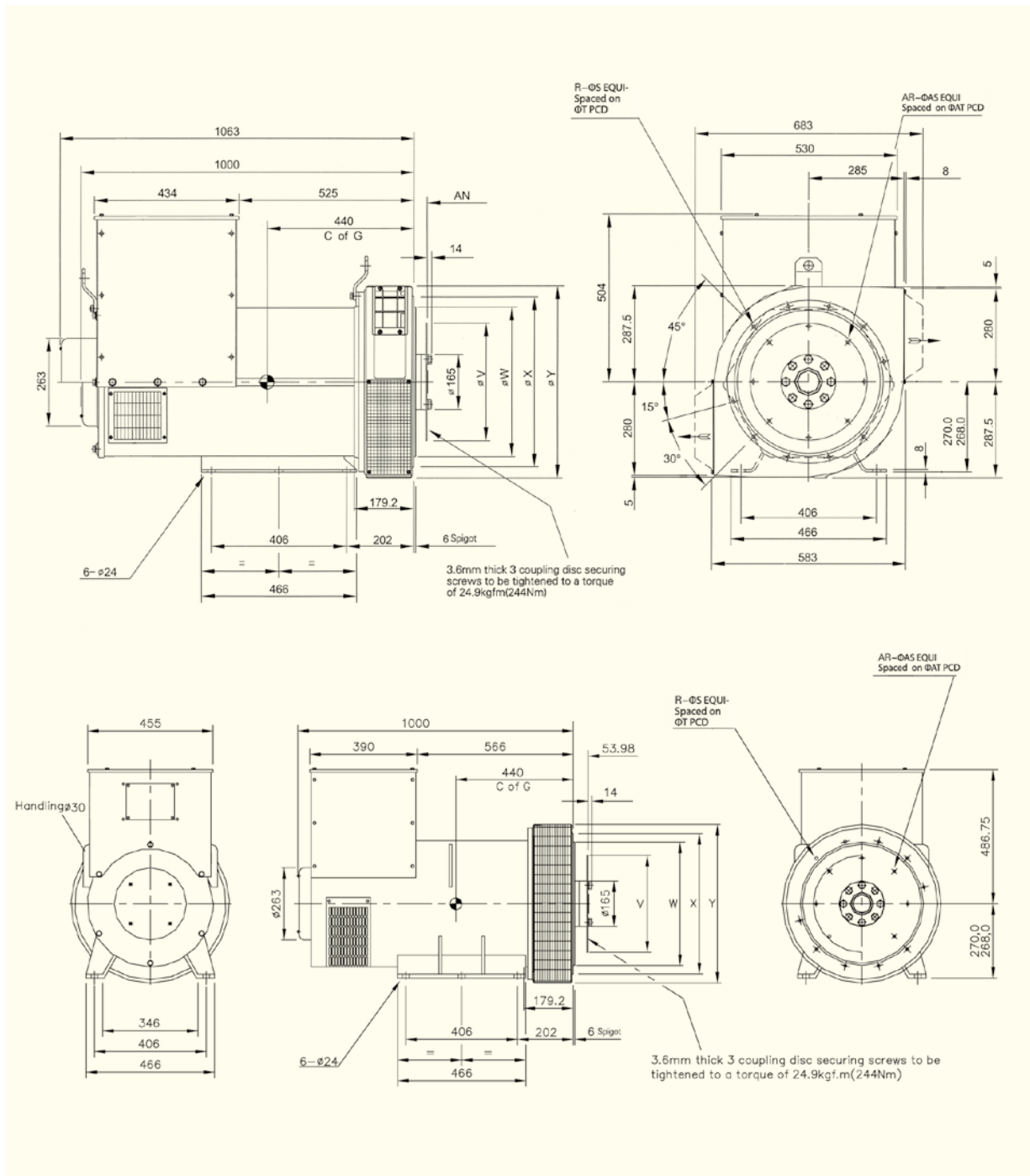
◎ The ship uses the rated value is based on the ambient temperature 45°C, the continuous running, all generators are 4 extremely.

◎ Arranges in order all voltages may obtain from the single wide winding, also namely may obtain through 12 going beyond a line dignified groups.

◎ Other special voltage range can be met by XINGNUO company



# **XN274J/K** OUTLINE DRAWING

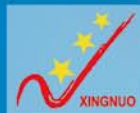


COUPLING DISC					
SAE NO.	AN	AR	AS	AT	V
11.5	39.68	8	11.0	333.3	352.35
14	25.4	8	13.5	438.2	466.67

ADAPTOR						
SAE NO.	R	S	T	W	X	Y
1	10	12.7	530.2	511.1	553	575
2	10	11.0	466.7	447.6	489	575

TRANSPORTATION DATA			
	NET WEIGHT A (Kg)	GROSS WEIGHT A (Kg)	PACKAGE SIZE(cm)
UC274J	720	760	117 × 64 × 99
UC274K	740	760	117 × 64 × 99

© All drawings and weight data are just for reference, please contact XINGNUO company if there is any doubt.



# XINGNUO ELECTRIC

## XN4

### 3-PHASE INDUSTRY ALTERNATORS POWER



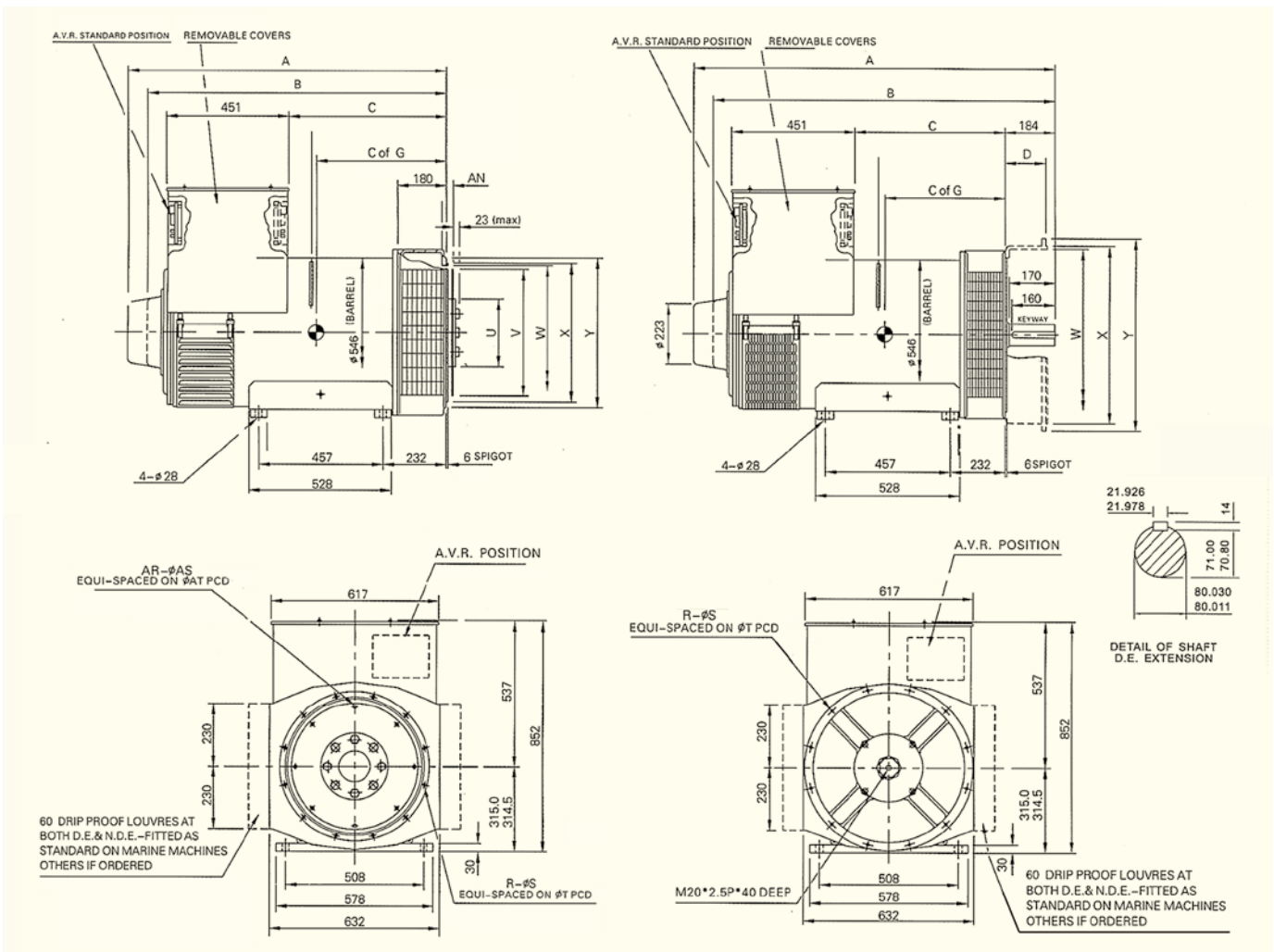
XN4		50Hz(1500RPM)			60Hz(1800RPM)		
VOLTAGE (V)		CLASS"H" TEMPERATURE-RISE(125°C)			CLASS"H" TEMPERATURE-RISE(125°C)		
STAR—SERIES		380	400	415	416	440	480
STAR—PARALLEL		190	200	208	208	220	240
△—SERIES		220	230	240	240	254	277
XN4C	RATED CAPACITY	250	250	250	294	300	313
	RATED POWER	200	200	200	235	240	250
	EFFICIENCY	92.5	92.4	92.7	92.4	92.6	92.6
XN4D	RATED CAPACITY	294	294	294	350	356	375
	RATED POWER	235	235	235	280	280	300
	EFFICIENCY	92.3	92.7	93	92.6	92.7	92.8
XN4ES	RATED CAPACITY	312.5	312.5	312.5	375	394	419
	RATED POWER	250	250	250	300	315	335
	EFFICIENCY	93.2	93.5	93.6	93.3	93.5	93.7
XN4FS	RATED CAPACITY	344	344	344	425	425	440
	RATED POWER	275	275	275	340	340	352
	EFFICIENCY	93.1	93.3	93.5	93.5	93.5	93.5
XN4F	RATED CAPACITY	375	375	375	456	456	475
	RATED POWER	300	300	300	365	365	380
	EFFICIENCY	93.0	93.2	93.3	93.0	93.3	93.4
XN4FG	RATED CAPACITY	400	400	400	455	480	500
	RATED POWER	320	320	320	364	384	400
	EFFICIENCY	93.1	93.2	93.4	93.1	93.4	93.4

Note: ① TALL land use the rated value are based on the ambient temperature 40°C, in the elevation 1000 meters.

② Arranges in order all voltages may obtain from the single wide winding, also namely (three-phase) and 4 terminals (single-phase) reorganizes through 12 terminals may obtain.

③ Other special voltage range can be met by XINGNUO company

## XN4 OUTLINE DRAWING



DIMENSION			
TYPE	B	C	CG
XN4C	1051	534	463
XN4D	1051	534	463
XN4ES	1191	674	483
XN4FS	1191	674	530
XN4F	1191	674	530
XN4FG	1191	674	530

COUPLING DISC						
S.A.E.NO.	AB	AR	AS	AT	U	V
11.5	39.68	8	10.3	333.4	250	352.3
14	25.40	8	13.5	438.1	250	466.6
18	15.87	8	16.7	543.0	250	571.1

ADAPTOR						
S.A.E.NO.	BR	BS	BT	W	X	Y
0	12	14	679.5	626	647.6	711
1/2	12	14	619.1	569	584.1	680
1	12	12.7	530.2	496	511.1	617
2	12	11	466.7	432	447.6	617
3	12	11	428.6	394	409.5	617

TRANSPORTATION DATA			
TYPE	NET WEIGHT(kg)	GROSS WEIGHT(kg)	PACKAGE SIZE(cm)
XN4C	820	880	151 × 79 × 107
XN4D	880	950	151 × 79 × 107
XN4ES	1010	1065	151 × 79 × 107
XN4FS	1085	1145	151 × 79 × 107
XN4F	1125	1185	151 × 79 × 107
XN4FG	1150	1200	151 × 79 × 107

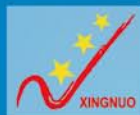
DIMENSION			
TYPE	B	C	CG
XN4C	1205	504	433
XN4D	1205	504	433
XN4ES	1345	644	453
XN4FS	1345	644	500
XN4F	1345	644	500
XN4FG	1345	644	500

ADAPTOR							
S,A,E,NO.	BR	BS	BT	D	W	X	Y
0	16	14	679.5	150	632	647.6	711
1/2	12	14	619.1	150	569	584.1	648
1	12	12.7	530.2	150	496	511.1	553
12V135	12	14	625.0	158	590	604.9	660

TRANSPORTATION DATA			
TYPE	NET WEIGHT(kg)	GROSS WEIGHT(kg)	PACKAGE SIZE(cm)
XN4C	820	880	151 × 79 × 107
XN4D	880	950	151 × 79 × 107
XN4ES	1010	1065	151 × 79 × 107
XN4FS	1085	1145	151 × 79 × 107
XN4F	1125	1185	151 × 79 × 107
XN4FG	1150	1200	151 × 79 × 107

© All drawings and weight data are just for reference, please contact XINGNUO company if there is any doubt.





# XINGNUO ELECTRIC

## XN5

### 3-PHASE INDUSTRY ALTERNATORS POWER

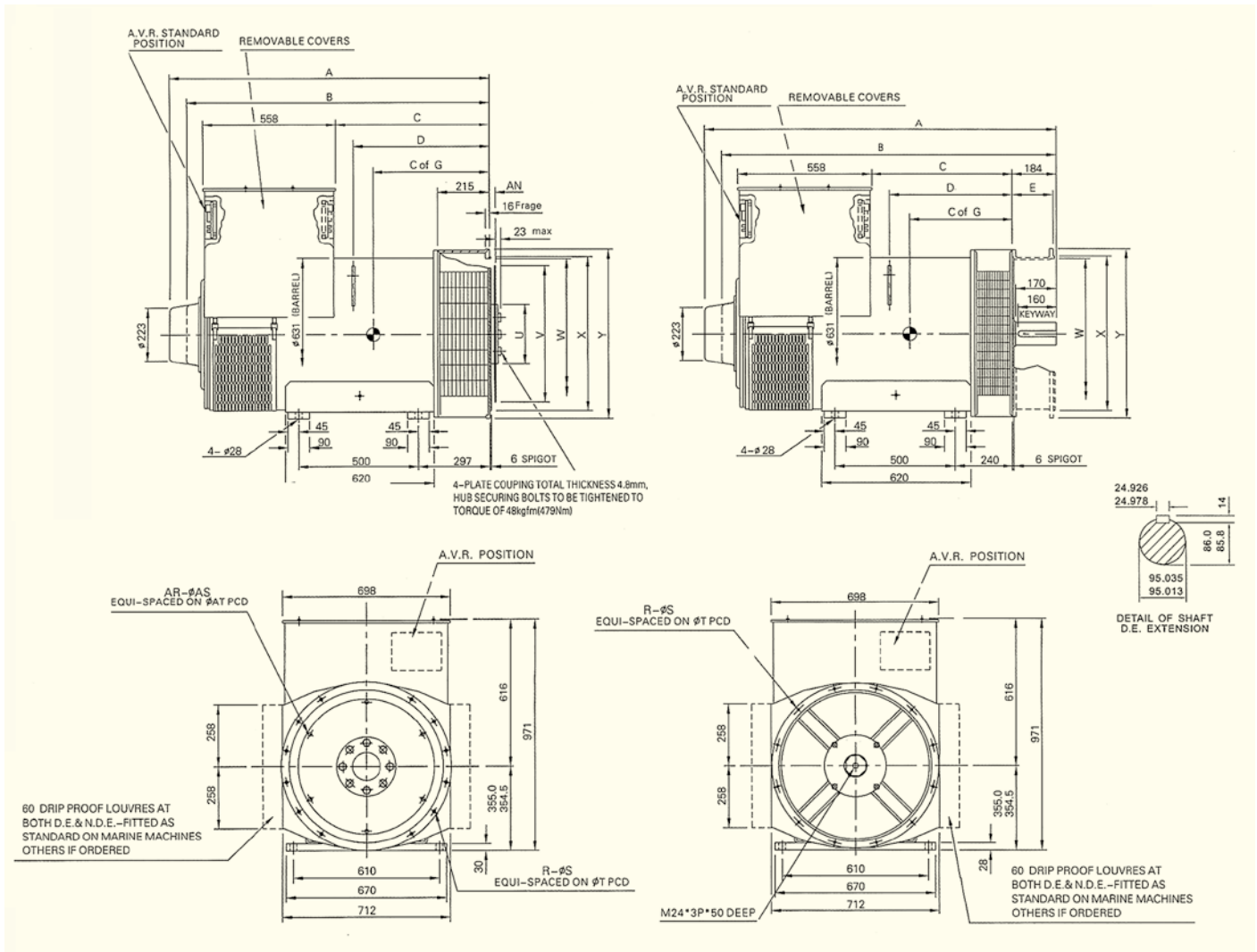


XN5		50Hz(1500RPM)			60Hz(1800RPM)		
VOLTAGE(V)		CLASS"H" TEMPERATURE-RISE(125℃)			CLASS"H" TEMPERATURE-RISE(125℃)		
STAR—SERIES		380	400	415	416	440	480
STAR—PARALLEL		190	200	208	208	220	240
△—SERIES		220	230	240	240	254	277
XN5C	RATED CAPACITY	450	450	450	550	563	594
	RATED POWER	360	360	360	440	450	475
	EFFICIENCY	93.8	94.1	94.3	93.9	93.3	94.2
XN5D	RATED CAPACITY	500	500	500	594	594	644
	RATED POWER	400	400	400	475	475	515
	EFFICIENCY	94.1	94.4	94.6	94.2	94.4	94.6
XN5ES	RATED CAPACITY	562.5	562.5	562.5	650	650	662.5
	RATED POWER	450	450	450	520	520	530
	EFFICIENCY	94.5	94.6	94.5	94.6	94.6	94.6
XN5E	RATED CAPACITY	600	600	600	650	663	750
	RATED POWER	480	480	480	520	530	600
	EFFICIENCY	94.5	94.8	94.9	94.6	95.0	94.9
XN5FS	RATED CAPACITY	625	625	625	750	780	800
	RATED POWER	500	500	500	600	624	640
	EFFICIENCY	94.6	94.9	95.0	94.8	94.9	95.1
XN5F	RATED CAPACITY	675	688	688	800	800	825
	RATED POWER	540	550	550	640	640	660
	EFFICIENCY	94.6	95.0	95.1	94.8	94.9	94.9

Note: ◎ TALL land use the rated value are based on the ambient temperature 40℃, in the elevation 1000 meters.

- ◎ Arranges in order all voltages may obtain from the single wide winding, also namely (three-phase) and 4 terminals (single-phase) reorganizes through 12 terminals may obtain.
- ◎ Other special voltage range can be met by XINGNUO company .

## XN5 OUTLINE DRAWING



DIMENSION			
TYPE	B	C	CG
XN5C	1216	592	515
XN5D	1216	592	535
XN5E	1341	717	620
XN5FS	1341	717	620
XN5F	1341	717	620

COUPLING DISC						
S.A.E.NO.	AB	AR	AS	AT	U	V
14	25.40	8	13.5	438.1	250	466.6
18	15.87	6	16.7	543.0	250	571.4
21	0	12	16.7	641.3	250	673.0

ADAPTOR						
S.A.E.NO.	BR	BS	BT	W	X	Y
00	12	14	850.9	772	787.3	882
0	12	14	679.5	632	647.6	711
1/2	12	14	619.1	568	584.1	700
1	12	12.7	530.2	496	511.1	700

TRANSPORTATION DATA			
TYPE	NET WEIGHT(kg)	GROSS WEIGHT(kg)	PACKAGE SIZE(cm)
XN5C	1200	1350	165 × 95 × 116
XN5D	1308	1450	165 × 95 × 116
XN5E	1600	1700	165 × 95 × 116
XN5FS	1650	1753	165 × 95 × 116
XN5F	1720	1820	165 × 95 × 116

DIMENSION			
TYPE	B	C	CG
XN5C	1343	535	498
XN5D	1343	535	518
XN5E	1468	660	565
XN5FS	1468	660	565
XN5F	1468	660	565

ADAPTOR							
S.A.E.NO.	BR	BS	BT	W	X	Y	D
00	16	14	850.9	772	787.3	882	170
0	16	14	679.5	632	647.6	711	150
1/2	12	14	619.1	569	584.1	648	150
1	12	12.7	530.2	496	511.1	553	150
12V135	12	14	625.0	590	604.9	660	158

TRANSPORTATION DATA			
TYPE	NET WEIGHT(kg)	GROSS WEIGHT(kg)	PACKAGE SIZE(cm)
XN5C	1205	1350	170 × 95 × 116
XN5D	1308	1450	170 × 95 × 116
XN5E	1600	1700	170 × 95 × 116
XN5FS	1650	1753	170 × 95 × 116
XN5F	1720	1820	170 × 95 × 116

© All drawings and weight data are just for reference, please contact XINGNUO company if there is any doubt.

**XINGNUO**

---